



Wildfire & WUI Response

Capabilities

You serve Others.
We serve You.™




The Darley Advantage

Trusted Since 1908

Our Mission

To passionately serve the world's first responder and tactical communities by providing high quality, safe, and innovative products with unmatched commitment and service.

-  Family Owned and Operated
-  118+ Years in Pump Manufacturing and Equipment Distribution
-  International Support
-  Unmatched Customer Service



Scan to learn more on
shop.darley.com/wildland

Why Darley?

Darley is a leading provider of innovative solutions for the fire and municipal sector. We offer a wide range of products and services, from tactical equipment and pumps, to protective gear and nozzles. We have over 100 years of experience in serving the needs of our customers, and we are constantly developing new technologies and capabilities to meet the evolving challenges of the 21st century.

Don't See What You Need? Just Ask.

We listen. We've added proven products from trusted brands, and innovative new partners. If there's a product or solution that you need and don't see, contact a Darley specialist to assist you.



Explore More on Shop.Darley.com

Complete Selection of Wildland Gear and Pumps

Darley Dollars Loyalty Program

Earn 3% back on every purchase as Darley Dollars, which you can use for future online purchases.

Wide Selection of Products

Choose from a wide range of firefighting equipment, rescue gear, tools, and supplies from top brands.

User-Friendly Online Experience

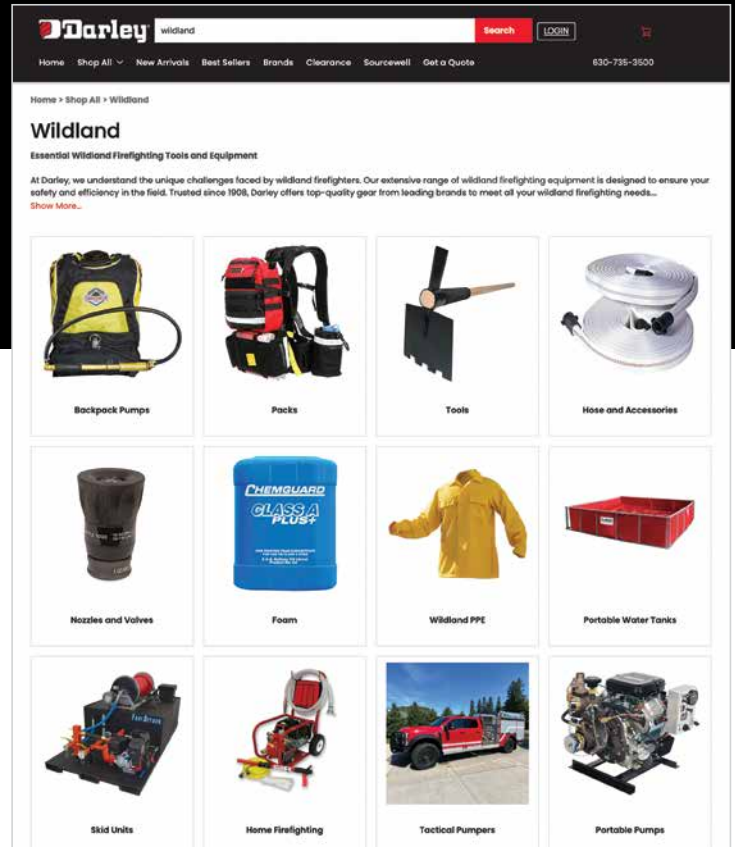
Enjoy features like self-service shopping, live chat assistance, click-to-quote, order tracking, and shopping list management.

Dedicated Support

Benefit from a dedicated sales support team focused on expanding products and services.

Trusted Provider

Darley has been a trusted firefighting and rescue equipment provider since 1908.



Darley offers reliable wildfire gear from leading brands to ensure your safety and efficiency in the field.

Wildfire Capabilities

- Backpack pumps
- Packs
- Tools
- Hose and accessories
- Pumps
- Wildfire PPE
- Portable water tanks
- Skid Units
- Nozzles and Valves
- Foam and CAFS



Sourcewell provide easy access to competitively awarded contracts through a trusted solicitation process.

Contract #020124-WSD



Pumping on the Fireline

Wildland attack pumps are compact, high-pressure units designed to deliver water quickly and efficiently in rugged terrain. Built for mobility and performance, these pumps are essential for initial attack efforts and remote firefighting operations.



Davey 13 HP Honda Twin Impeller Portable Pump AK306

The Davey 13 HP portable pump delivers powerful, high-pressure performance in a compact, lightweight design - ideal for rapid deployment in wildland and remote firefighting scenarios.



HEF 11H Dolphin Floating Pump

This high-volume pump is engineered for rapid water deployment in wildland fire scenarios. Its floating design allows it to operate efficiently in shallow or hard-to-reach water sources, which is optimal for remote firefighting operations.



2BE 18 Vanguard Portable Pump

A portable pump that delivers high-volume, medium-pressure performance in a rugged, compact design - best-fit for wildland firefighting where mobility, reliability, and rapid water deployment are critical.



2BE 21H Portable Pump

This model pump delivers medium pressure and high volume performance in a rugged, engine-mounted design, making it preferred for wildland firefighting where durability, mobility, and rapid water delivery are essential.



2BE 24K Pump

An effective pump for wildland firefighting where resilience, fuel efficiency, and powerful water delivery are essential in remote and demanding environments.



Fast Attack Skid Units

Quickly access and suppress wildland fires with these mobile pumps that are designed to fit into a standard 8ft. pickup truck bed.
Fast Attack 1 Skid Unit - Economy
Fast Attack 2 Skid Unit - High Pressure
Fast Attack 2 Skid Unit - Multipurpose



Portable Pumps & Skid Units

Davey Pumps

Floating Pumps

Gasoline-Powered Portable Pumps

Skid Units



Wildfire Protection

Explore our premium Wildfire PPE, designed for maximum protection and comfort. Shop gloves, helmets, boots, clothing, and chaps from trusted brands like Fire-Dex and Bullard. Equip yourself with the best to stay safe in the toughest conditions.



FirePro Goggles
BK004

Wildfire eye protection is essential for safeguarding firefighters against radiant heat, airborne debris, severe fogging, and thick smoke, ensuring their safety and operational effectiveness.



Wildfire Full Brim Helmet
AC512Y

Designed to shield against heat, falling debris, and impact hazards, a Wildfire helmet enhances firefighter safety in demanding wildfire environments.



7 oz. Tecasafe Coat
BP145

Engineered for durability and thermal resistance, Wildfire turnout gear safeguards firefighters from extreme heat, flames, and environmental hazards during wildfire operations.



Pro-Tech 8 Wildfire Gloves-Gauntlet with Debris Blocker Cuff - BN616

Built to withstand intense heat and rugged terrain, Wildfire gloves protect firefighters' hands from burns, abrasions, and punctures during wildfire response.



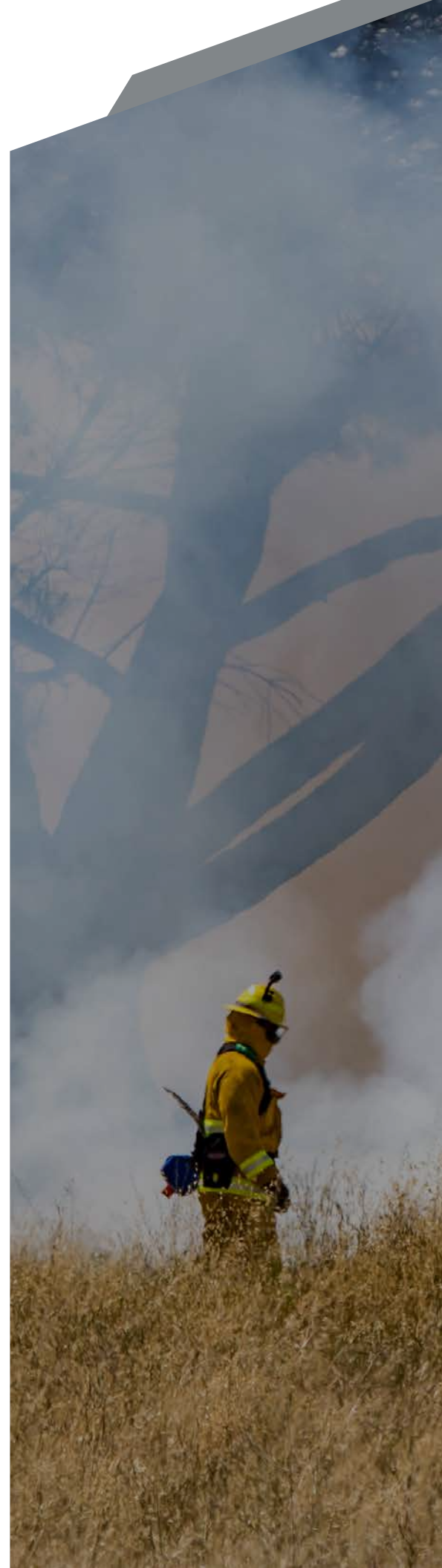
UL Classified Five-Ply
Wildfire Forestry Chaps
BP321

Wildfire forestry chaps provide essential leg protection against sharp tools, thorns, and heat, helping firefighters navigate dense, hazardous terrain safely and efficiently.



Station 1 EMS/Wildfire
Boot - MBK1250

Optimized for the rigors of wildfire environments, boots for Wildfire firefighting offer heat resistance, durability, and reliable traction to protect and support responders in challenging terrain.



Wildfire PPE

- Boots
- Chaps
- Clothing
- Eye Protection
- Gloves
- Helmets
- Face & Neck Protection



Attack Wildfires with the Right Tools

Equip yourself with the best tools for wildland firefighting. Our selection includes essential gear like fire rakes, axes, drip torches, and more. Each tool is designed for durability and efficiency, ensuring you can confidently tackle any wildfire.



Gorgui Classic Tool
BP898

The Gorgui Classic is a versatile multi-purpose tool designed specifically for wildland firefighting. It combines essential firefighting functions into one efficient package, featuring a multi-function cutting blade, an ergonomic eucalyptus wood handle, and a removable head.



Darley Drip Torch
W439

Designed to safely ignite controlled burns, drip torches provide firefighters with a reliable tool for managing wildfire behavior and creating firebreaks in strategic operations.



Fire Swatter
E252

Fire swatters for wildfire use provide an effective, low-impact method for suppressing spot fires and smothering embers, enabling crews to maintain control lines and reduce the risk of flare-ups in wildfire zones.



Collapsible Rescue
Shovel - AK010

Compact and easy to deploy, the collapsible rescue shovel for fighting wildfires provides essential digging and clearing capabilities for rapid response in rugged, remote environments.

Trusted Tools

When it comes to wildfire firefighting, Darley delivers the tools you can rely on. Our expertly curated selection includes fire rakes, axes, drip torches, and more. Each are crafted for maximum durability and efficiency. With Darley equipment in hand, you're prepared to face any wildfire with confidence and control.



Tools

- Classic Tools
- Drip Torches & Accessories
- Fire Axes
- Fire Brooms
- Rakes
- Shovels
- SiteMaster® Tools
- Swatters



Stay Mobile. Stay Ready.

Essential for wildland firefighters, these durable, lightweight backpack pumps provide reliable water delivery in remote areas. Designed for comfort and efficiency, they help you tackle fires with precision and ease.



VFT PRO 5-Gal. Backpack Fire Pump - BP894

Equipped for mobility and efficiency, the Wildland backpack fire pump allows firefighters to deliver targeted water streams in remote areas, enhancing control over spot fires and flare-ups.



SmokeChaser™ Pro 5-Gal. Fire Pump - BP026

This durable, ergonomic firefighting solution with a USFS-approved brass pump and a 5-gallon capacity. Ideal for wildfire firefighters and emergency responders, it ensures reliable performance in critical situations.



FS-1 Spotter Wildland Fire Pack - BP526

This versatile, lightweight fire pack is compact enough for all-day comfort and can be configured for multiple tasks, so you carry only what's essential.



Fire Shelter AB397

Wildland fire shelters provide critical last-resort protection, shielding firefighters from radiant heat and direct flame exposure during life-threatening wildfire entrapments.



RCP-1 Pro Radio Chest Harness - BN087

This radio chest harness offers unmatched comfort and functionality and is designed for secure and easy access to your gear.



Wildland Progressive Hose Lay Pack - BL438

Built for Wildland firefighters, this hose pack combines heavy-duty ballistic nylon construction with ergonomic padded straps for a durable, comfortable, and efficient way to carry and deploy hoses on the fireline.





Backpack Pumps & Packs

Fire Packs

Fire Shelters

Five Gallon Backpack Pumps

Galvanized Pumps

Hose Lay Packs

Hydration Packs

Poly Tank Pumps

Radio & Gear Harnesses

Rigid-Pak Pumps

Precision Water Delivery in Any Terrain

Durable hoses and accessories designed for maneuverability in rugged terrain, allowing firefighters to deliver water directly to the fireline.



1.5" Forestry Hose Clamp
BP515

Forestry hose clamps provide secure, quick shutoff control of water flow, enabling firefighters to manage hose lines safely and efficiently during wildfire operations.



50' Lightweight Booster
Hose - BL38501

Lightweight booster hoses with couplings deliver high-pressure water flow in a durable, compact design, ensuring quick deployment and reliable performance in demanding wildfire conditions.



White Pencil Line Hose -
BP152W100

The Wildland pencil line hose offers lightweight, flexible water delivery for precise control and quick maneuverability in tight wildfire conditions.



Hose Coiler
BR103

This Wildland hose coiler streamlines hose retrieval and storage, reducing fatigue and saving time for firefighters during wildfire suppression and cleanup operations.



SnapTank - 22 oz. Liner -
2000-Gal. - AZ37203

Portable SnapTank liners offer quick-deploy, durable water containment for wildfire operations, ensuring reliable support for pump-and-roll or remote water supply setups in rugged environments.



Husky Standard Folding
Tank - BN066

Portable water tanks provide fast, reliable water storage with a durable, collapsible frame, supporting efficient wildfire suppression in harsh wildfire zones.



Hose, Portable Water Tanks & Accessories

Forestry Hose

Hose Clamps & Accessories

Portable Water Tank Frames

Water Tank Liners

Every Drop Counts

Wildland firefighting nozzles and valves are critical for controlling water flow and spray patterns on the fireline. These tools provide precision and adaptability, allowing crews to manage pressure and direction.



The 10–23 GPM 1" Dual Range Nozzle is a durable, high-performance tool built for wildland firefighting, allowing crews to quickly shift between low-flow water conservation and higher-volume suppression. This is ideal for managing limited water supplies in remote wildfire conditions.



The gated wye enables firefighters to split a single hose line into two independently controlled streams, enhancing water distribution and operational flexibility during wildfire suppression.



The 1.5" NH Female Barrel Strainer with Poppet prevents debris from entering water lines while allowing consistent flow, ensuring reliable pump operation and protecting equipment in active fireground conditions.



The Twin Tip Forestry Nozzle offers dual spray patterns for quick switching between straight stream and fog, giving firefighters enhanced control and adaptability in dynamic wildfire conditions.

Wildland Firefighting Control

Darley's equipment empowers firefighting crews with the adaptability needed to manage pressure and direction in dynamic wildfire conditions. With Darley, teams can count on performance that meets the demands of the most challenging environments.



Nozzles and Valves

Applicator Wands
Ball Shutoff Valves
Fog Nozzles
Forestry Tip Nozzles
Rigid Inlet Tip Nozzles
T-valves
Valve Handles
Wye Valves

When Water Isn't Enough

Foam and CAF pumps are vital assets in WUI firefighting and are designed to increase the effectiveness of water by improving its ability to penetrate and cling to fuels. These agents help suppress flames faster and reduce water usage, making them essential for efficient fire control.



Barricade II Fire Gel - BL524

Barricade Fire Gel provides a powerful layer of fire protection by creating a heat-resistant barrier that helps shield homes and property from approaching wildfires.



FLAME-FOAM® Foam Cartridge - BL523

Solid foam cartridges offer rapid, easy-to-use fire suppression by expanding into a dense, insulating foam that helps smother flames and prevent re-ignition.



Class A Plus Foam Concentrate - AC721

Class A Plus foam concentrate enhances wildfire suppression by increasing water's ability to penetrate vegetation and cling to surfaces, helping firefighters control and contain wildland fires more effectively.



Odin® Hornet CAFS

This model provides a "self-contained" gasoline-powered "slide-in" type Compressed Air Foam System (CAFS). The CAFS is designed to fit into the back of a standard length and width pick-up truck or fire service body.



Odin® Weapon CAFS

This model provides a 73 HP Deutz, 4 cylinder, water-cooled, turbo-diesel engine and 2.5 AGE single-stage Darley fire pump.



The Darley Pump Advantage

Darley's complete line of pumps available on www.darley.com/pumps

Foam and CAFS

Barricade Fire Gel
Foam Cartridges
Foam Concentrate
Practice Foam
Odin® Hornet CAFS
Odin® Weapon CAFS

Robotic Support for Wildfire Crews

Technology that delivers real-time data, reduce risk to personnel, and support faster containment, which protect lives, and natural resources.



Freefly Alta X

The Freefly Alta X is wildland workhorse. From aerial ignition to mapping, the Alta X is a versatile UAV capable of many tasks with its 33-pound payload capacity and up to 50 minutes of flight time. NDAA Compliant and Blue UAS certified.



Vallfirest Dronster

The Dronster is a high-performance machine designed to work safely and efficiently in emergency and forest management sectors. Capable of working with 3 tools simultaneously, including an extinguishing monitor.



Parrot ANAFI UKR

The ANAFI UKR is quick deployable ISR UAV that provides real-time awareness. It also helps crews see through the smoke and detect hot-spots they might not see from the ground.

Ultimate Firefighting Vehicle

The Tactical Pumper™ is built to navigate tight spaces and challenging terrains, this versatile pumper ensures quick access to fire scenes where larger trucks can't go.



International CV515 Chassis

The Darley Tactical Pumper™ is a state-of-the-art apparatus designed to meet the dynamic needs of modern firefighting and rescue operations.



Ford 550 Chassis

This pumper combines superior performance, reliability, and versatility, making it an invaluable asset for any wildland emergency response team.



Max Tactical Pumper

The Max Tactical Pumper™ is engineered to safely get to the fire quickly and into places a full-size pumper just can't access.



Scan to email our UxS team for more information



Darley Tactical's Engineering Team developed the M34 Module™ which is designed in accordance with standards set forth in CAL FIRE's Type 3 Wildland Fire Apparatus Specification.

M34 Wildland Pump Module

Uncrewed Systems

Aerial, Aquatic & Ground Robots

Tactical Pumpers & UTVs

Light Tactical Pumper™
Max Tactical Pumper™
Tactical Pumper™
Ultra Light Tactical Pumper™



Scan to learn more about
our Tactical Pumper™



Darley

Trusted Since 1908



shop.darley.com/wildland